



# YELLOW ACTIVITY MONITORING SYSTEM

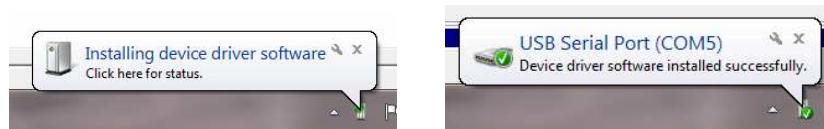
Kinetic Electronic Designs CC

## Desk Reader Driver Installation

Revision LH23

This document covers the steps that should be taken to install the device driver software that allows a PC running Windows to communicate with the Yellow Activity Monitoring System DR72 Desk Reader.

In most instances, the facilities provided by the Windows operating system, together with an internet connection, will result in automatic installation of the required device driver software. This will happen as soon as the Desk Reader is plugged into a spare USB port. No user interaction is required. The device driver will be automatically downloaded and installed. Messages similar to those shown below will appear in the bottom right of the screen to show progress.



Device driver software installation is only done once, following the first-time connection of the Desk Reader to a USB port.

Should you not see messages indicating that the device driver software has been correctly installed, refer to the appropriate sections below.

The driver software, referred to in the sections below, is included in the YAMS software CD under the \Drivers folder.

Alternatively it may be downloaded from the KED System Software downloads page on the website <http://www.ked.co.za/index.php?page=4>. The downloaded file is a zipped file, and it should be unpacked to a local, temporary folder location (e.g. on the desktop). The contents of the temporary folder may be deleted after the driver installation is completed.

Contact KED for further assistance, if required.

### Windows 2000 or Windows XP

If Windows can not download or locate the correct device driver software, it will launch the “Found New Hardware Wizard”. On this first screen, select “No, not this time” from the options available and then click “Next”.



On the next screen, select “Install from a list or specific location (Advanced)” and then click “Next”.



Select "Search for the best driver in these locations" and enter the file path in the combo-box (e.g. "D:\Drivers" where D: is the drive letter of the CD ROM) or browse to it by clicking the browse button. Once the file path has been entered in the box, click "Next" to proceed.



In most Windows installations, the screen below will then be displayed. Click "Continue Anyway".



The screen below will be displayed while Windows installs the device driver software.

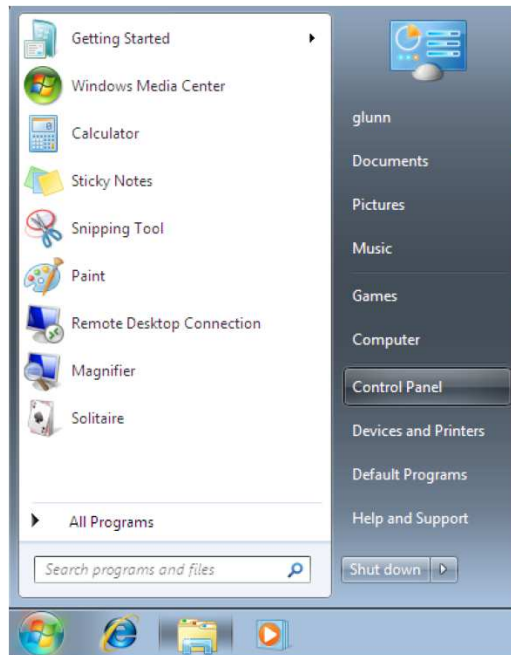


Windows should then display a message indicating that the installation was successful. Click "Finish" to complete the operation.

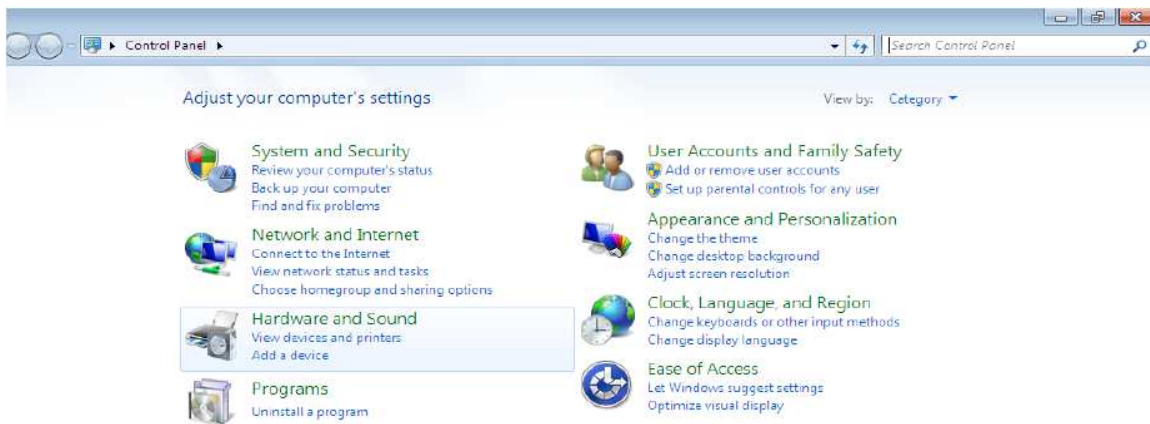


## Windows Vista or Windows 7

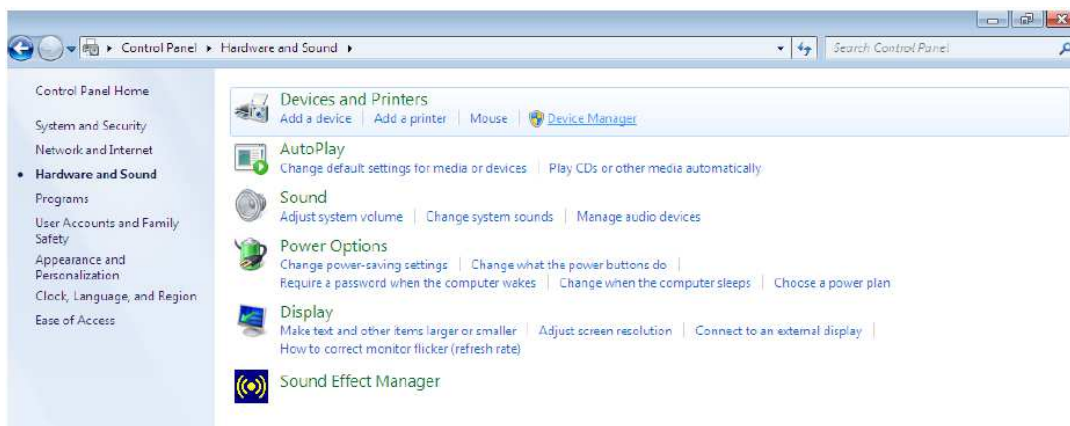
If Windows can not download or locate the correct device driver software, press the Windows start button to bring up the start menu and select “Control Panel”.



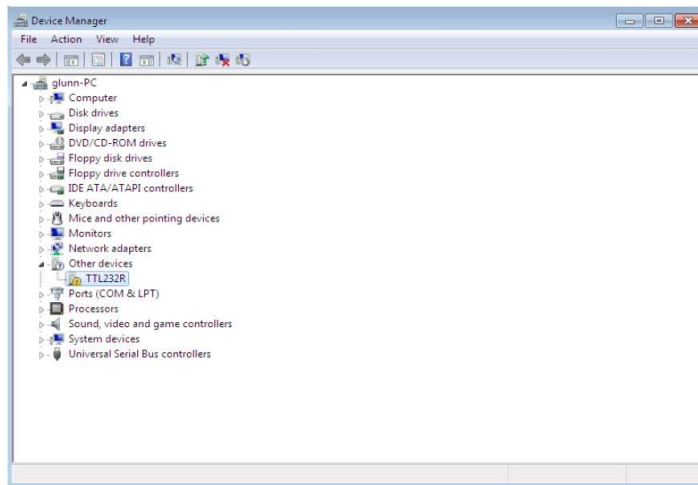
From the Control Panel window select “Hardware and Sound”



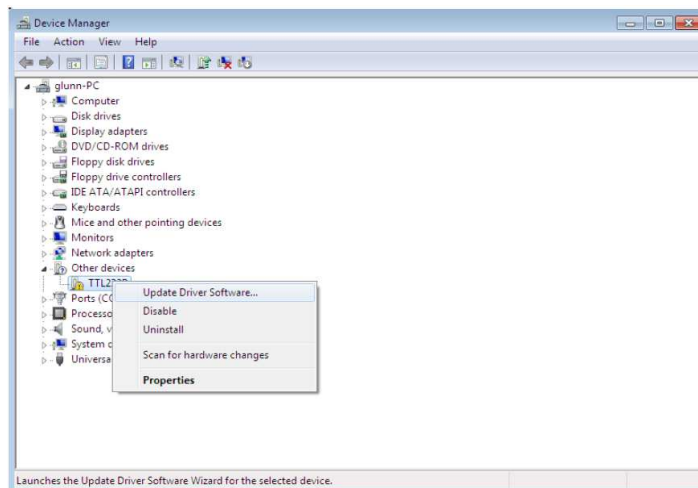
At the next screen, select “Device Manager”



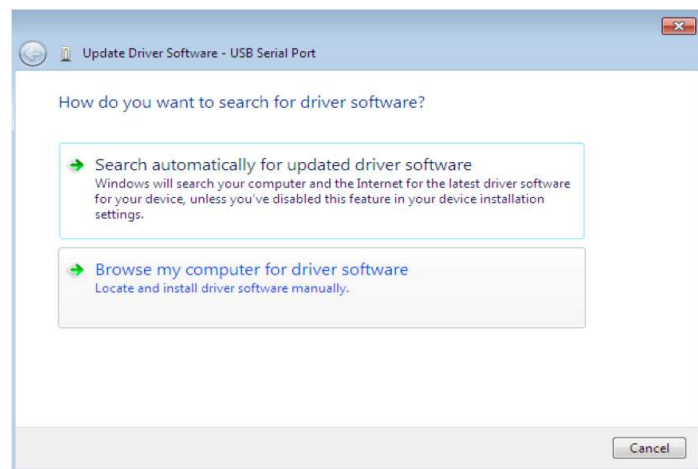
In the Device Manager window there will be a device under “Other Devices” with a yellow warning symbol to indicate a problem ie no driver installed. The text next to this device will vary but should include the “232” identifier.



Right-click on the problem device to bring up a context menu, as shown below.

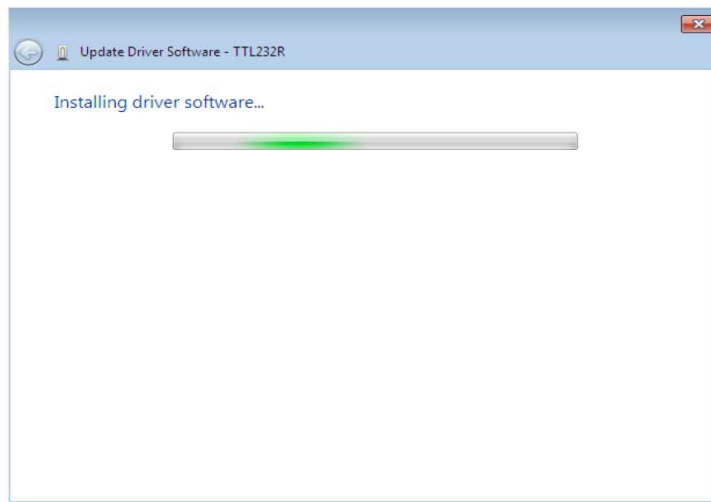
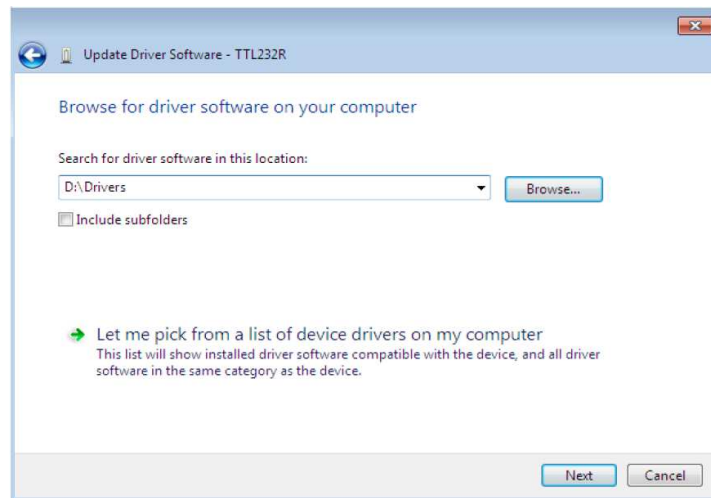


From the displayed menu select “Update Driver Software...” This will display the option for an automatic search or a manual search.

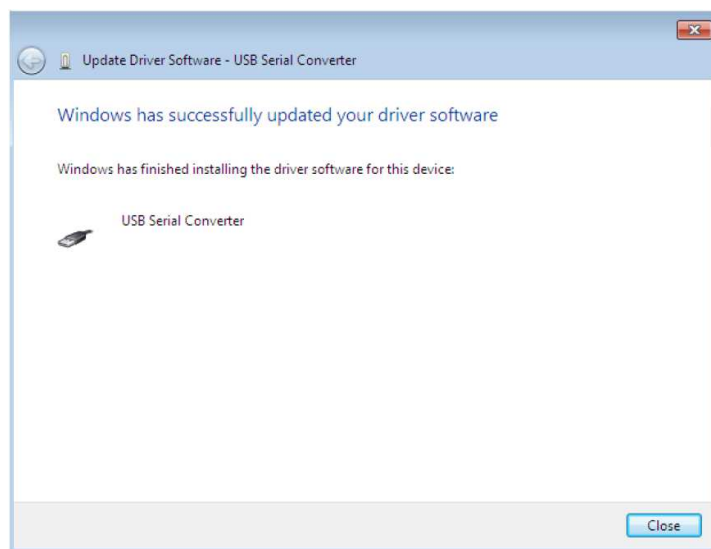


Select the second option, to browse manually.

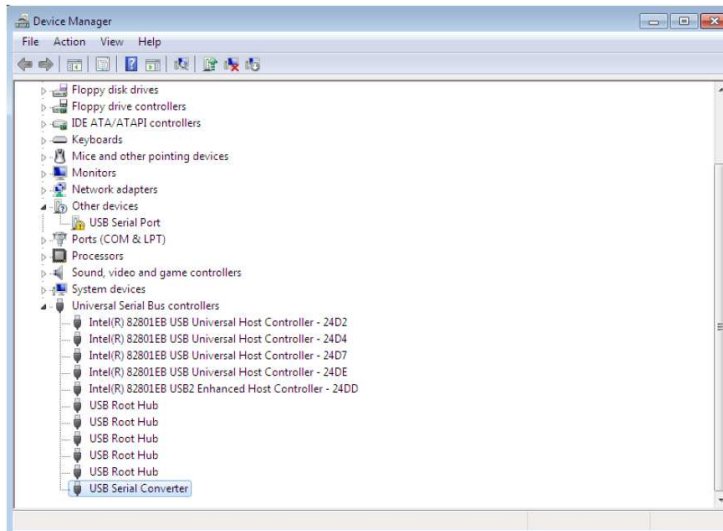
The browse selection screen will be shown. In the location box enter or browse to the location of the driver software on the installation CD (e.g. "D:\Drivers", where D: is the CD ROM drive). After entering the location select "Next" to start the installation.



When the installation has finished a completion screen is displayed.



Click "Close" to close this window and go back to the Device Manager Window.



The Device Manager will now show a “USB Serial Port” under the “Other devices” section. The second part of the device driver installation involves exactly repeating the last few steps, starting with right-clicking on the “USB Serial Port” entry, and following through to completion, as was done above.